



**TMI**

the  
**commercial casework**  
solution



TMI Cares



# commercial markets

TMI casework will make a strong visual statement about your facility's commitment to quality. Guests and their families will sense warmth, quality, and a concern for detail. Staff and visitors alike will be inspired by a professional environment designed to help them be as effective and efficient as possible. As a single source provider, TMI integrates our casework, countertop and architectural woodwork options to provide a cohesive, functional commercial environment.

Since 1969, TMI Systems Corporation has been providing AIA Premium and Custom Grade laminate products to institutional markets across the United States. The TMI factories have nearly 150,000 square feet of manufacturing space, and employ some of the furniture industry's leading equipment technology.

Our sophisticated engineering software enables TMI to price, engineer and manufacture a nearly infinite combination of casework products, offering many variables in terms of color, dimensions, hardware selections, materials and construction details.

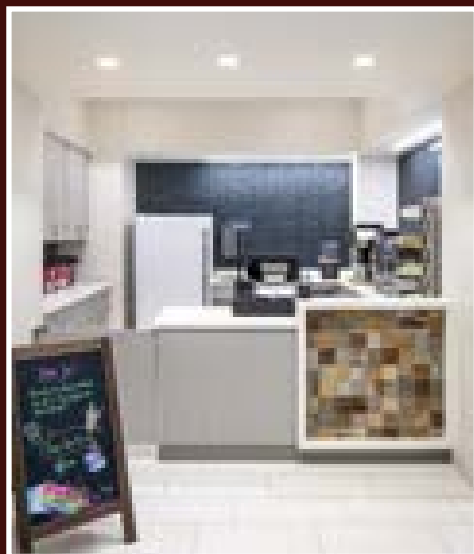
Visit [www.tmisystems.com](http://www.tmisystems.com)

## quality

TMI sources raw materials from the best vendors in the industry, based upon a strict set of requirements including competitive pricing, quality materials, and excellent customer service. As a result we offer our customers high quality finished products which meet their individual design needs and budget requirements.



Custom Wall Panels  
Highlands Ranch, Colorado



Coffee Shop  
Greeley, Colorado



Court Room  
Raleigh, North Carolina



Restroom Vanity  
Dundalk, Maryland



Salon  
Raleigh, North Carolina



Airport Gate Counter  
Denver, Colorado



Retail Sales  
Belgrade, Montana

## experience

As a comprehensive resource for commercial environments, we also design and manufacture storage solutions for financial institutions, sports venues, retail sales, and municipal buildings. In addition, TMI products enhance activities in both public spaces and non-public work areas.

Community  
Wellness Center  
Beulah, North Dakota



## flexibility

Our casework products feature fixed modular, flexible rail-mounted, and mobile options so commercial spaces can be reconfigured according to evolving needs and application requirements.

Multi-Purpose  
Activity Room  
Beulah, North Dakota



TMI Cares



since 1969

**TMI Systems Corporation**

50 South Third Avenue West  
Dickinson, ND 58601-5595  
Phone (701) 456-6716

Visit: [www.tmisystems.com](http://www.tmisystems.com)

*Employee Owned*

TMI is proud to be an active member and program supporter of these important industry associations:



The mark of responsible forestry

