



the
soffit fascia panels
catalog



soffit fascia panels

TMI Cares

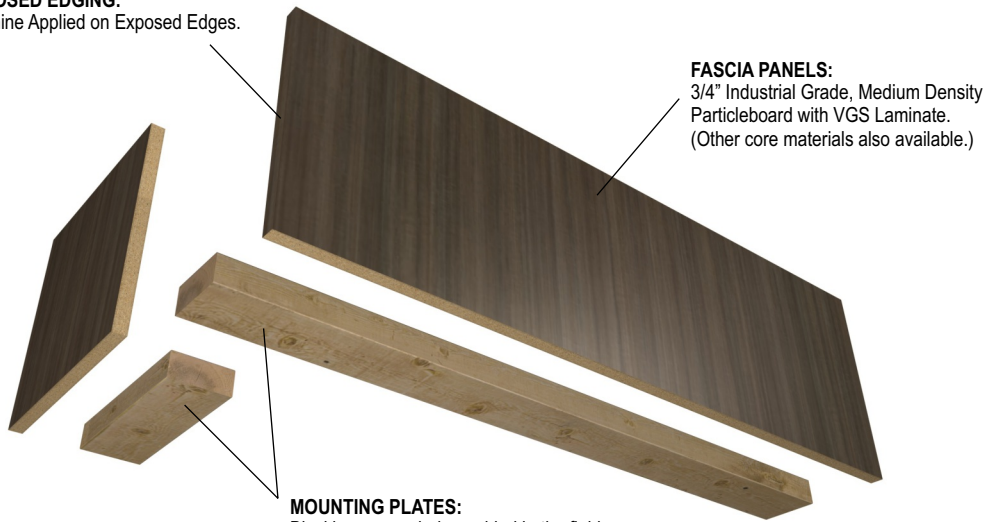
SPECIALTY SOFFITS



All TMI catalog sections are available online at: <https://tmisystems.com/products/product-types/>

TMI PRODUCT NO.	DESCRIPTION	W	H	D
A1300 3/4" FASCIA PANELS INSTALLED FLUSH TO CABINET BODY	Soffit Fascia Panels shipped knocked-down, assembled and scribed to fit in the field installation process. The Soffit Assembly is engineered to be installed flush to the cabinet body. * Up to 47" when grain oriented vertically.	Up to * 95"	Up to 47"	11" - 24" Max.

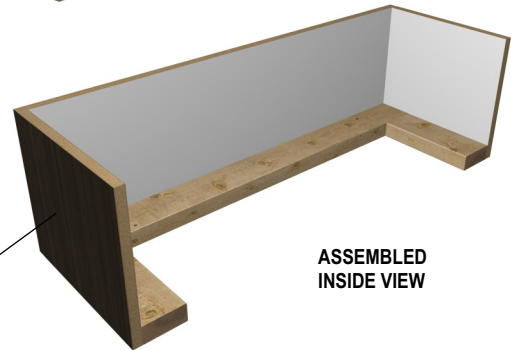
EXPOSED EDGING:
Machine Applied on Exposed Edges.



FASCIA PANELS:
3/4" Industrial Grade, Medium Density Particleboard with VGS Laminate.
(Other core materials also available.)

MOUNTING PLATES:
Blocking as needed, provided in the field.

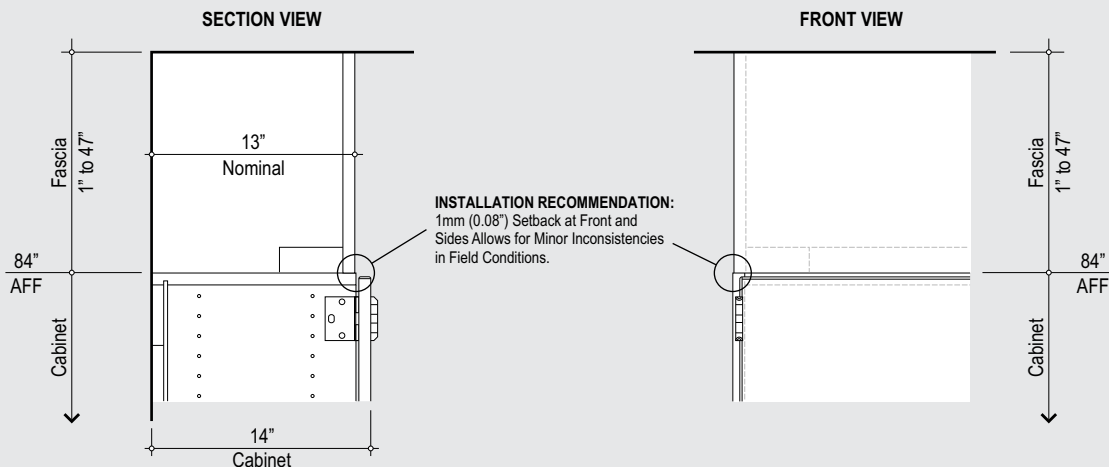
SOFFIT ASSEMBLY:
Panels shipped knocked-down and assembled in the Field. Scribed as needed in the Field.



FINISHED RETURNS:
Provided as needed.

**ASSEMBLED
INSIDE VIEW**

INSTALLATION FLUSH WITH BODY



SPECIALTY SOFFITS

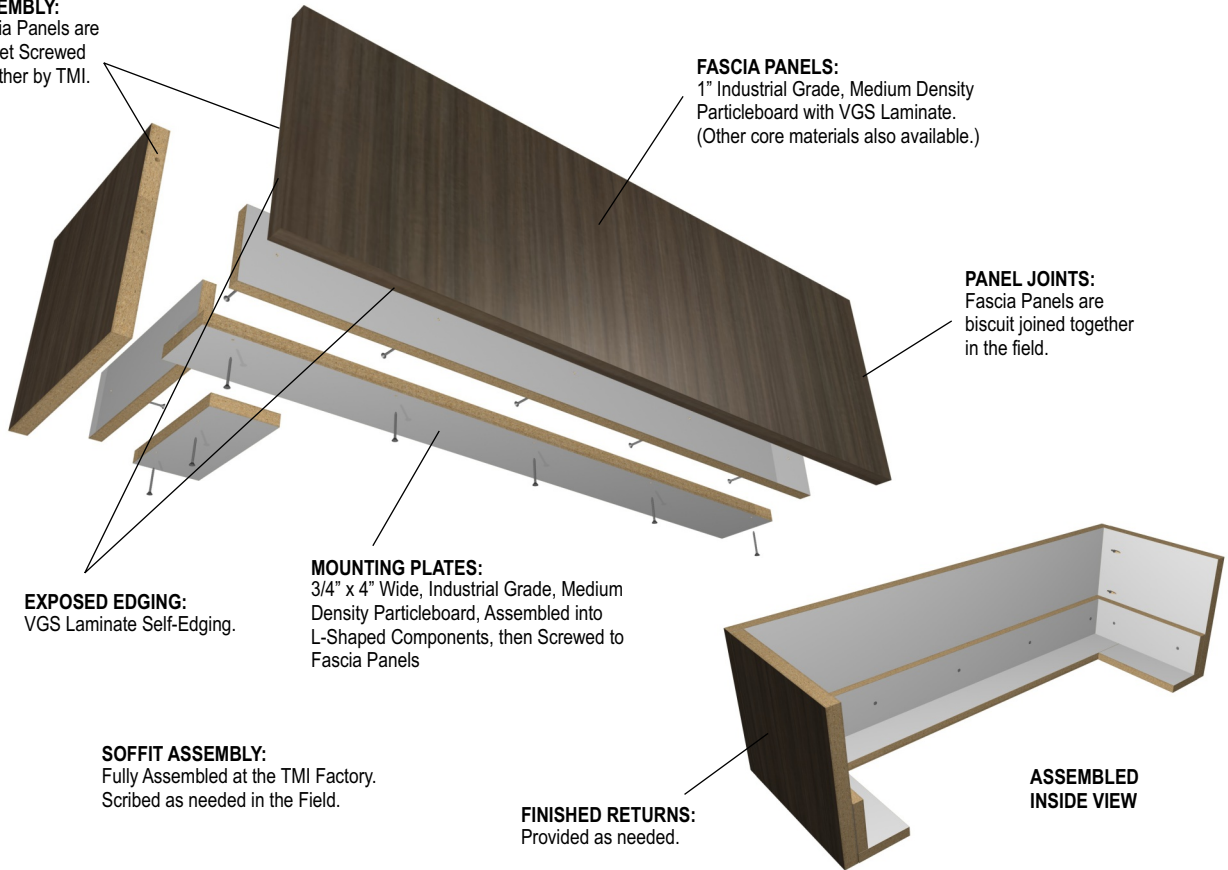


All TMI catalog sections are available online at: <https://tmisystems.com/products/product-types/>

TMI PRODUCT NO.	DESCRIPTION	W	H	D
A1301 1" FASCIA PANELS INSTALLED FLUSH TO CABINET FACE	Soffit Fascia Panels fully assembled at the TMI factory, scribed to fit in the field. The Soffit Assembly is engineered to be installed flush to the cabinet face. See A1301A & A1302A assemblies for Fascia installed Flush to Body. * Up to 47" when grain oriented vertically.	Up to * 95"	Up to 47"	11" - 24" Max.

ASSEMBLY:

Fascia Panels are Pocket Screwed Together by TMI.



FASCIA PANELS:

1" Industrial Grade, Medium Density Particleboard with VGS Laminate. (Other core materials also available.)

PANEL JOINTS:

Fascia Panels are biscuit joined together in the field.

MOUNTING PLATES:

3/4" x 4" Wide, Industrial Grade, Medium Density Particleboard, Assembled into L-Shaped Components, then Screwed to Fascia Panels

EXPOSED EDGING:

VGS Laminate Self-Edging.

SOFFIT ASSEMBLY:

Fully Assembled at the TMI Factory. Scribed as needed in the Field.

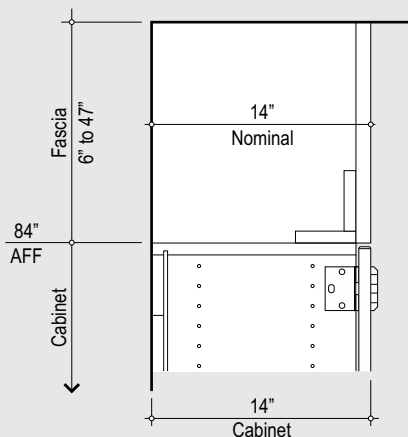
FINISHED RETURNS:

Provided as needed.

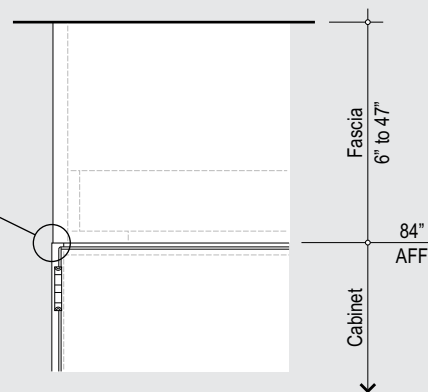
ASSEMBLED INSIDE VIEW

INSTALLATION FLUSH WITH FACE

SECTION VIEW



FRONT VIEW



INSTALLATION RECOMMENDATION:
1mm (0.08") Setback at Sides Allows for Minor Inconsistencies in Field Conditions.

SPECIALTY SOFFITS

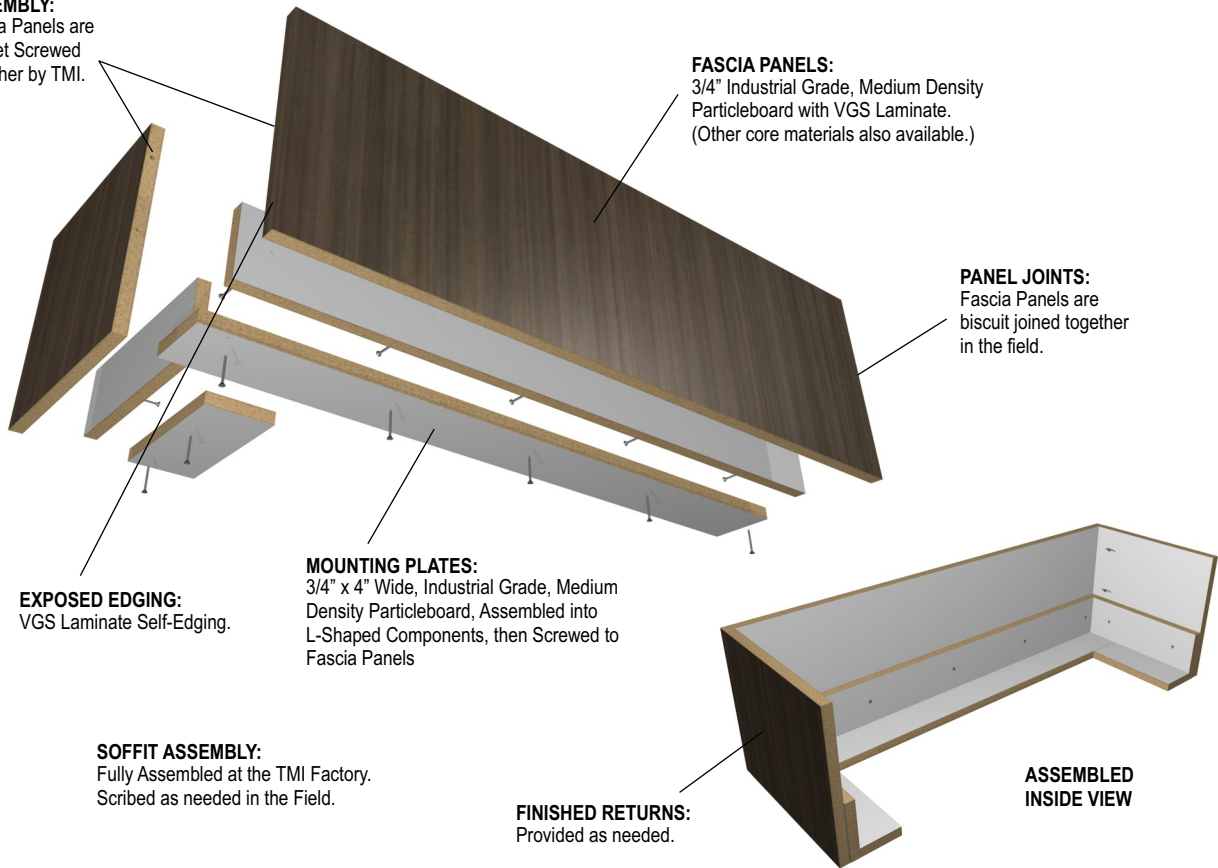


All TMI catalog sections are available online at: <https://tmisystems.com/products/product-types/>

TMI PRODUCT NO.	DESCRIPTION	W	H	D
A1301A 3/4" FASCIA PANELS INSTALLED FLUSH TO CABINET BODY	Soffit Fascia Panels fully assembled at the TMI factory, scribed to fit in the field. The Soffit Assembly is engineered to be installed flush to the cabinet body. See A1301 & A1302 assemblies for Fascia installed Flush to Face. * Up to 47" when grain oriented vertically.	Up to * 95"	Up to 47"	11" - 24" Max.

ASSEMBLY:

Fascia Panels are Pocket Screwed Together by TMI.



FASCIA PANELS:

3/4" Industrial Grade, Medium Density Particleboard with VGS Laminate. (Other core materials also available.)

PANEL JOINTS:

Fascia Panels are biscuit joined together in the field.

EXPOSED EDGING:
VGS Laminate Self-Edging.

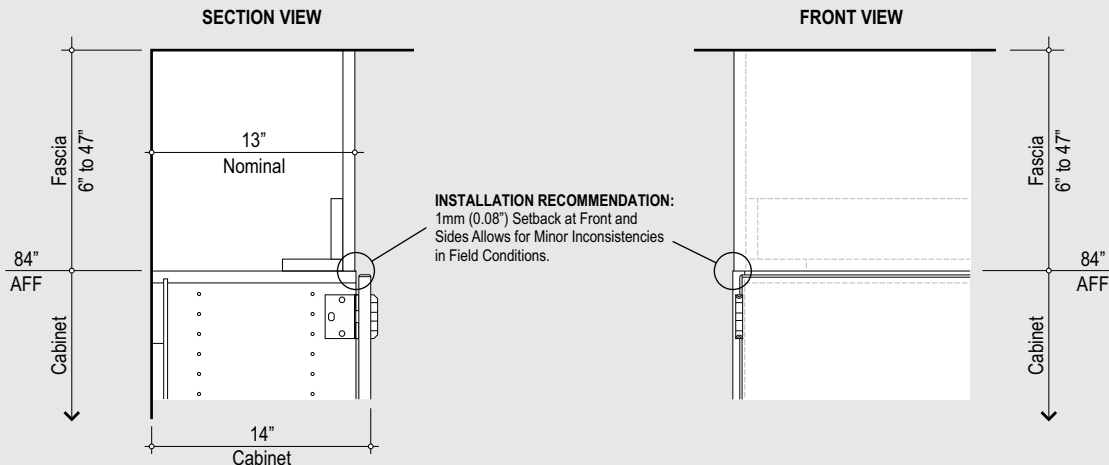
MOUNTING PLATES:
3/4" x 4" Wide, Industrial Grade, Medium Density Particleboard, Assembled into L-Shaped Components, then Screwed to Fascia Panels

SOFFIT ASSEMBLY:
Fully Assembled at the TMI Factory. Scribed as needed in the Field.

FINISHED RETURNS:
Provided as needed.

ASSEMBLED INSIDE VIEW

INSTALLATION FLUSH WITH BODY



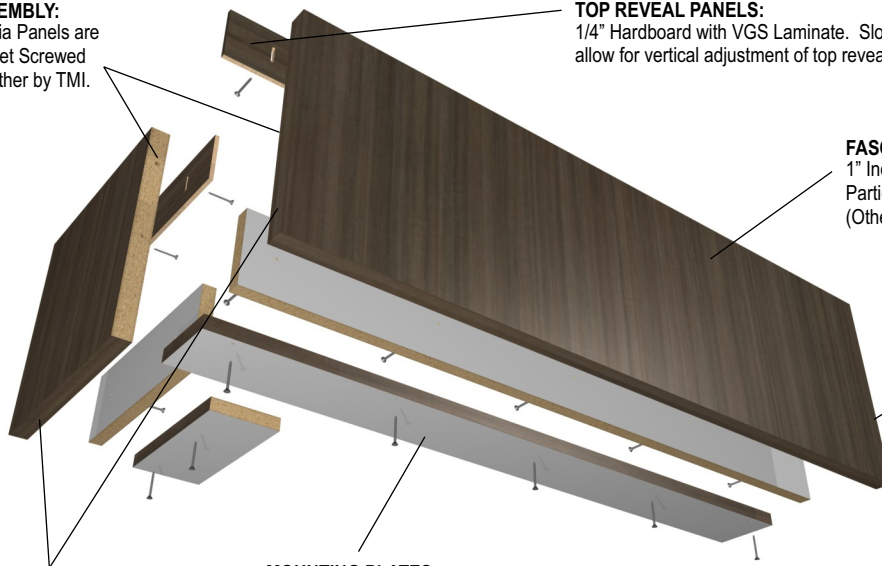
SPECIALTY SOFFITS



All TMI catalog sections are available online at: <https://tmisystems.com/products/product-types/>

TMI PRODUCT NO.	DESCRIPTION	W	H	D
A1302 1" FASCIA PANELS WITH REVEALS, INSTALLED FLUSH TO CABINET FACE	Soffit Fascia Panels fully assembled at the TMI factory, scribed to fit in the field. The Soffit Assembly is engineered to be installed flush to the cabinet face. Adjustable top and bottom reveal. See A1301A & A1302A assemblies for Fascia installed Flush to Body. * Up to 47" when grain oriented vertically.	Up to * 95"	Up to 47"	11" - 24" Max.

ASSEMBLY:
Fascia Panels are Pocket Screwed Together by TMI.



TOP REVEAL PANELS:
1/4" Hardboard with VGS Laminate. Slotted holes allow for vertical adjustment of top reveal dimension.

FASCIA PANELS:
1" Industrial Grade, Medium Density Particleboard with VGS Laminate. (Other core materials also available.)

PANEL JOINTS:
Fascia Panels are biscuit joined together in the field.

EXPOSED EDGING:
VGS Laminate Self-Edging.

MOUNTING PLATES:
3/4" x 4" Wide, Industrial Grade, Medium Density Particleboard, Assembled into L-Shaped Components, then Screwed to Fascia Panels. Exposed Edge with VGS Laminate Self-Edging to create Bottom Reveal.

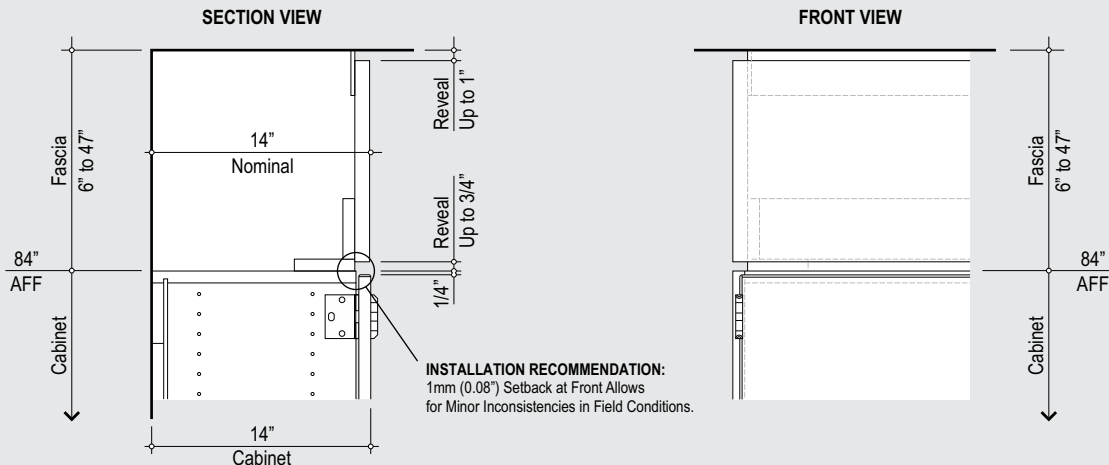
SOFFIT ASSEMBLY:
Fully Assembled at the TMI Factory. Scribed as needed in the Field.

FINISHED RETURNS:
Provided as needed.



ASSEMBLED INSIDE VIEW

INSTALLATION FLUSH WITH FACE



SPECIALTY SOFFITS



All TMI catalog sections are available online at: <https://tmisystems.com/products/product-types/>

TMI PRODUCT NO.	DESCRIPTION	W	H	D
A1302A 3/4" FASCIA PANELS WITH REVEALS, INSTALLED FLUSH TO CABINET BODY	Soffit Fascia Panels fully assembled at the TMI factory, scribed to fit in the field. The Soffit Assembly is engineered to be installed flush to the cabinet body. Adjustable top and bottom reveal. See A1301 & A1302 assemblies for Fascia installed Flush to Face. * Up to 47" when grain oriented vertically.	Up to * 95"	Up to 47"	11" - 24" Max.

ASSEMBLY:

Fascia Panels are Pocket Screwed Together by TMI.

TOP REVEAL PANELS:

1/4" Hardboard with VGS Laminate. Slotted holes allow for vertical adjustment of top reveal dimension.

FASCIA PANELS:

3/4" Industrial Grade, Medium Density Particleboard with VGS Laminate. (Other core materials also available.)

PANEL JOINTS:

Fascia Panels are biscuit joined together in the field.

EXPOSED EDGING:

VGS Laminate Self-Edging.

MOUNTING PLATES:

3/4" x 4" Wide, Industrial Grade, Medium Density Particleboard, Assembled into L-Shaped Components, then Screwed to Fascia Panels. Exposed Edge with VGS Laminate Self-Edging to create Bottom Reveal.

SOFFIT ASSEMBLY:

Fully Assembled at the TMI Factory. Scribed as needed in the Field.

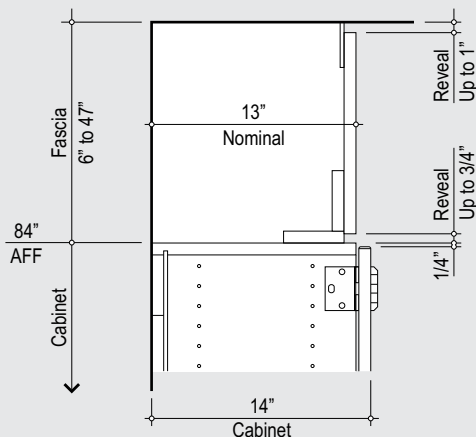
FINISHED RETURNS:

Provided as needed.

ASSEMBLED INSIDE VIEW

INSTALLATION FLUSH WITH BODY

SECTION VIEW



FRONT VIEW

